

# AIS 0132 CYCLONE

## PRODUCT DETAILS

PRODUCT DETAILS | FEATURES | SPECIFICATIONS |  
WARRANTY INFORMATION



C. (217) 335-4558

M. (+44) 7772736082

E. [info@agriincinerators.com](mailto:info@agriincinerators.com)

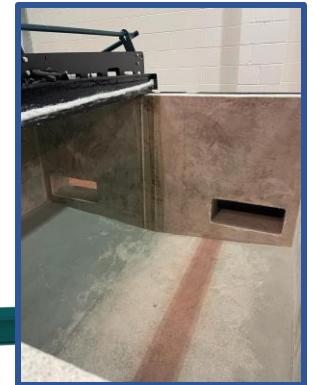
W. [www.agriincinerationsystems.com](http://www.agriincinerationsystems.com)

One of the key reasons our incinerators are recognized as being '*probably the best*' on the world market, is the use of our market leading and trusted low thermal mass monolithic concrete lining which is used in all of our models.

All models in the Cyclone Range are supplied with a secondary chamber, ensuring they fully conform to many legislative bodies around the world.

## AIS 0132 Cyclone

- With a \*high burn rate of up to 105kg/232lbs per hour and a large load capacity of up to 1180kg / 2602 lbs, the AIS 0132 Cyclone allows for the bio-secure disposal of your animal-by-product waste in the shortest time possible.
- Suited for a wide range of larger animal carcasses and animal-by-products generated across the agricultural sector including; Pigs & Sows, Dairy / Beef Cattle, Abattoirs, Slaughterhouses, Rendering Operations, Meat Processors, Equine.
- Easy to load via a manually operated roller lid located on the top of the incinerator, giving full access to a large main burning chamber. This ensures users can load the machine via skid loaders and tractor buckets.
- PLC timer controls with automatic burner shut off function and fast ignition burners. Two burners are in the main chamber, one additional burner is in the secondary chamber.
- Can be loaded whilst in operation maximizing the inherent thermal efficiency of our monolithic concrete lining, keeping running costs low.
- Ash doors, fitted as standard, this allows the user to safely remove ash whilst the machine is in operation, so you can keep on loading and burning your waste, saving time.
- Optional Extra Features include; Stack Extension / Ash Rake / USB Data Logger / Heat Exchanger / Control Panel screen size increase / Service Kits.



Internal view of 0132 main chamber



\*This may be subject to your local regulations. Speak to a member of our team for more information.

Image shown is of the AIS 0132 Cyclone model

"Our mission is to build the most robust, fuel-efficient, cost-effective solution for the disposal of animal and animal by product waste and to continue to be the brand that is known world-wide for both quality of product and quality of customer service".

### Be Assured of a Quality Product & Quality Service with AIS:

- Each machine is hand built by our team of skilled technicians in the UK and U.S.
- The reason your incinerator will last is due to the type of lining used. Our trusted monolithic casting system ensures maximum strength, reliability and a longer machine life. We are always happy to explain why our technology is far better than any other manufacturers product on the world market. Talk to us to find out more and make your own mind up.
- Behind the AIS brand is a team of experts who are always on hand to discuss any questions that you may have about incineration, so you can be assured of great service and a great product.
- But it goes beyond that, we stay with you for the life of the machine, always on hand if or when you need us. It's a people thing, it's an AIS thing.

### \*3 YEAR WARRANTY AS STANDARD:

The whole plant and associated equipment supplied as part of the overall installation will be covered by a \*36-month or 2100 hours warranty (whichever soonest) from the date of dispatch from the manufacturing premises of Agri Incineration Systems Limited, except for any consumable item as listed below and provided that:

- a) Each defect has materialized under normal operating conditions and not due to misuse, abuse, or operational errors.
- b) An effective maintenance regime is operated which may include a Service Contract being taken up at the time of handover. This Service Contract should be provided by Agri Incineration Systems Limited or trained and authorized agents.
- c) The contract price, as detailed within the quotation or as amended by agreement of both parties, has been paid in full.

#### Consumable Parts (Items not covered under Warranty).

1. Primary Chamber Thermocouples
2. Secondary Chamber Thermocouples
3. Access Door seals
4. Control Panel indicator bulbs or LEDs
5. Burner electrodes and leads
6. Burner probes and leads
7. Burner Blast Tubes
8. Burner Diffuser Assemblies
9. Burner nozzles / ionization probes
10. Grate Bars
11. Mechanical damage of any sort

*3 Year Warranty as standard, talk to us about a long-term Service Plan to suit you*



Specifications	Unit - Metric		Unit - Imperial	
*Burn Rate	Up to kg/hr	105	Up to lbs/hr	232
Front / Top Load		Top		Top
Static Operational Dimensions (LxWxH)	m	4.5 x 3.7 x 3.5	feet/inch	14' 9" x 12' x 11' 6"
External Height - Static	mm *inc. Stack	3500	feet/inch *inc. Stack	11' 6"
External Height - Static	mm *ex. Stack	2300	feet/inch *ex. Stack	7' 7"
Weight	Tonne *estimated	6.2	lbs *estimated	13669
Load Height from Ground (floor to bottom edge)	mm	1250	feet/inch	4' 1"
*Fuel Consumption Diesel	LPH *est during main burn	18.6 - 28.3	GPH *est during main burn	4.9 - 7.5
*Fuel Consumption LPG	LPH *est during main burn	27 - 42	GPH *est during main burn	6.3 - 11.2
*Fuel Consumption Nat Gas	m <sup>3</sup> /h *est during main burn	19 - 28	ft <sup>3</sup> /h *est during main burn	656 - 999
Grate Bars		No		No
Load Door Opening (Width x Height/Depth)	mm *area	2200 x 1800	ft/inch *area	7' 3" x 5' 11"
Chamber Size (LxWxH)	m	1.8 x 2.2 x 1.1	ft/inch	5' 10" x 7' 2" x 3' 7"
Chamber Actual Volume	m <sup>3</sup>	3.85	ft <sup>3</sup>	136
Chamber Load Volume	m <sup>3</sup>	2.13	ft <sup>3</sup>	75
*Chamber Load Capacity	kg	1180	lbs	2602
Std Stack Diameter	inch/mm *2D Size	14"	inch/mm *2D Size	14"
No. Main Burners		2		2
No. Secondary Burners		1		1
Burner Output	kW *heat	410	Btu *heat	1,398,978
Electric Consumption	kW *electricity	0.5	kW *electricity	0.5

\*The optimum performance of the incinerator is dependent upon efficient usage and waste type

"Our mission is to build the most robust, fuel-efficient, cost-effective solution for the disposal of animal and animal by product waste and to continue to be the brand that is known world-wide for both quality of product and quality of customer service".

Speak to a member of AIS today.

Call us on: (217) 335-4558

Email us: info@agriincinerators.com

Visit us: www.agriincinerationsystems.com